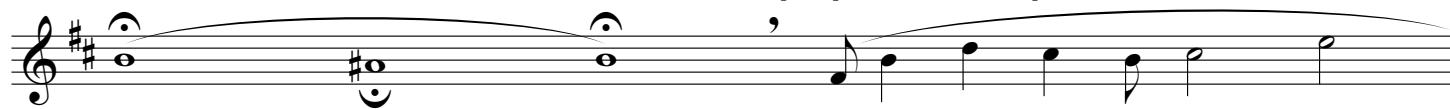


# Canzone d'inverno

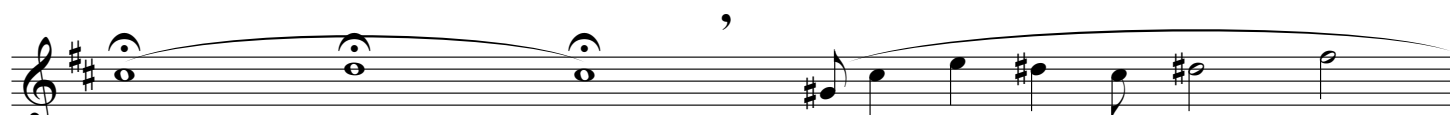
for bass flute

Stefano Masera

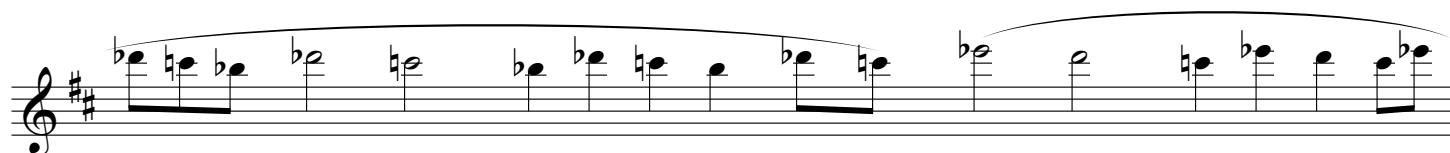
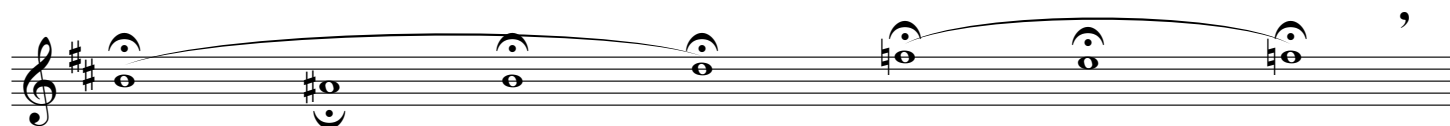
il respiro, quando indicato, è sempre sensibile



ossia: un respiro lungo diviso in tre note uguali



(simile sempre)



A page of musical notation consisting of ten staves. The music is written in treble clef with a key signature of two sharps (F# and C#). The notation includes various note values (quarter, eighth, and sixteenth notes), rests, and dynamic markings such as accents (>) and slurs. The first staff features a long melodic line with many slurs. The second and third staves continue this melodic line. The fourth staff consists of sustained chords. The fifth staff has a melodic line with a slur and an accent. The sixth staff features a melodic line with a slur and an accent. The seventh staff has a melodic line with a slur and an accent. The eighth staff has a melodic line with a slur and an accent. The ninth staff has a melodic line with a slur and an accent. The tenth staff has a melodic line with a slur and an accent.